

Dante 16

Historical building refurbishment - New Retail

Milan

Client: **Hines**

Total size: 6.000 sqm

Retail size: 2.500 sqm

Completed in december 2018

Architecture: **Garretti Associati Srl**

Structural engineering: **DEP Studio di Ingegneria**

Services engineering: **F&M Ingegneria**

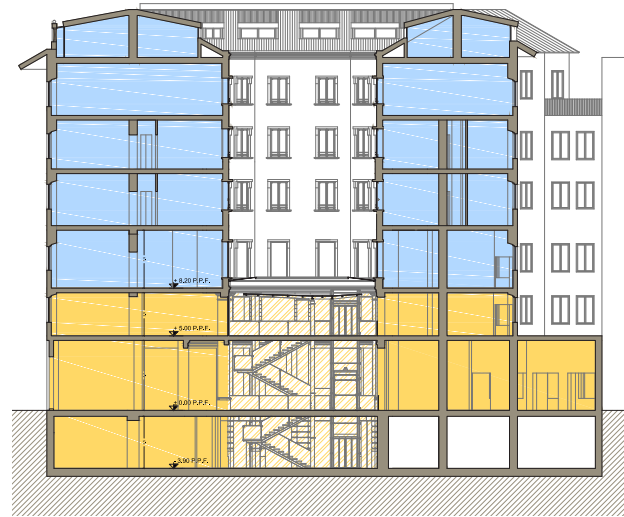
Project coordination, direzione lavori (supervision on site),
health & safety coordination: **Garretti Associati Srl**

General contractor: **STEDIL srl - Edlitecno Restauri Srl**

Construction cost: **4.200.000 euro**

Construction time: **july 2017 - december 2018**





Integrated Services:

- Concept design
- Architecture
- Project coordination
(services, structural, fire, it & telecom engineering)
- Building permit application
- Construction drawings packages
- Health & Safety coordination
- Direzione lavori (Supervision on site)